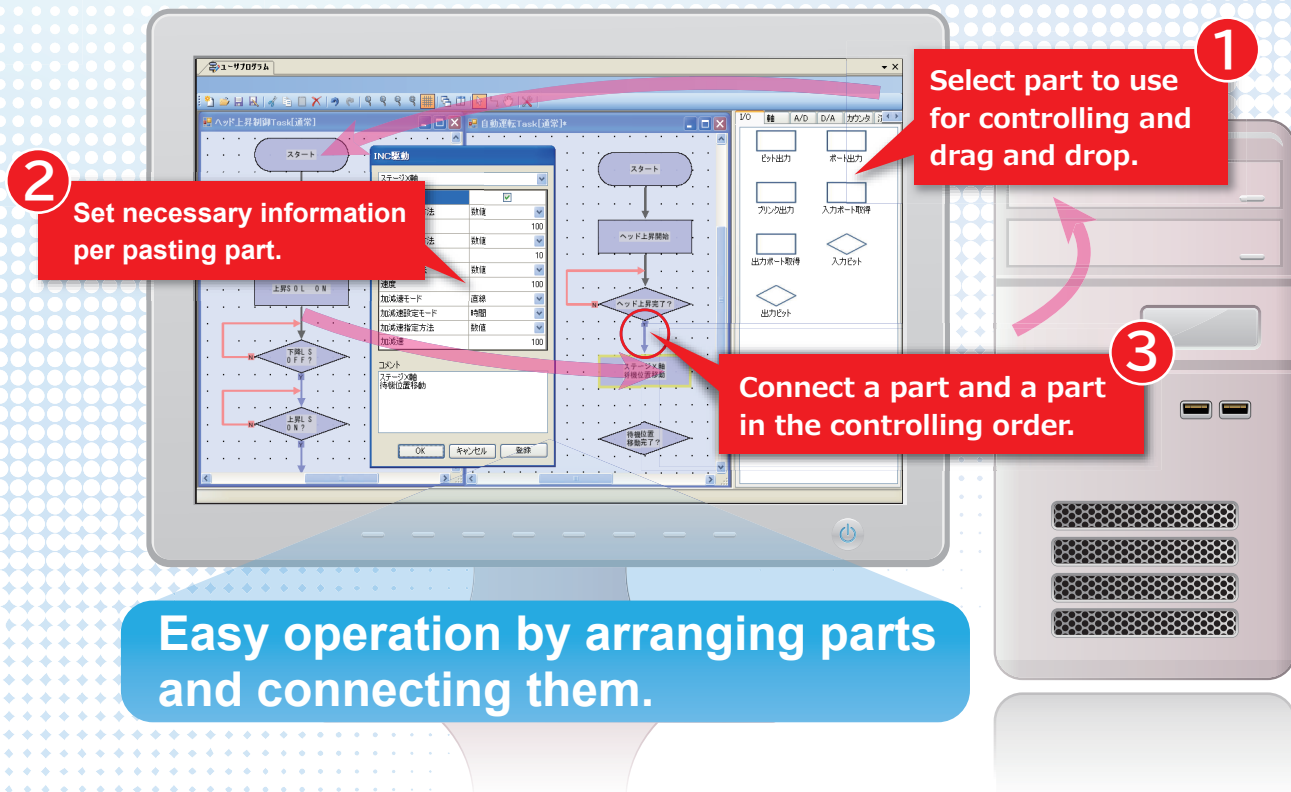


Helping improve productivity and maintainability

Development Tool for NX-2000

NX-Fit[®]



Make Programming Easier!

NX-Fit is a programming creation tool for FA controller, NX-2000. Control program can be created just by arranging the parts that are control objects, and creating a flow chart.

✓ Initial setting of hardware

For example, in case of an IO board, its just signal name, and in case of an axis board, just the parameter information such as the axis name, control resolution, etc. needs to be set.

✓ Wiring check

The manual operation function is available to make wiring and operation check easy.

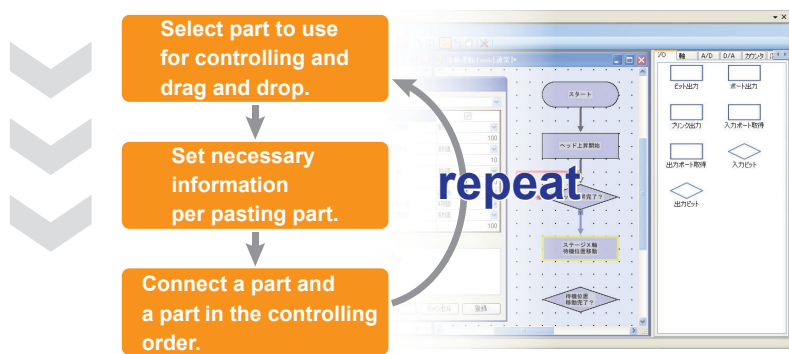
✓ Management of design resource

Because the control program is a flow chart, the relationship beteen program and design resources is easy to grasp.

Of course, the initial setting information of hardware remains.

The design PDF creation is possible by just “one click”.

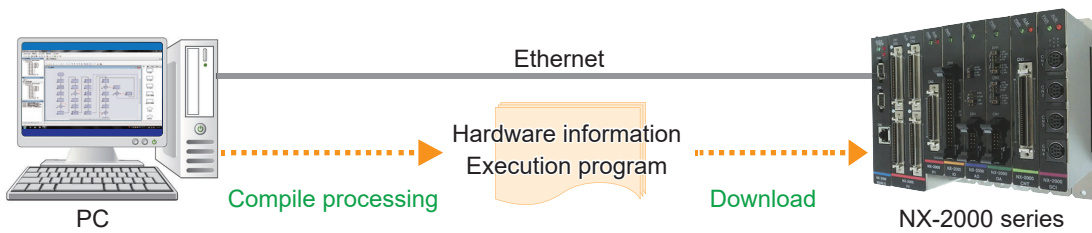
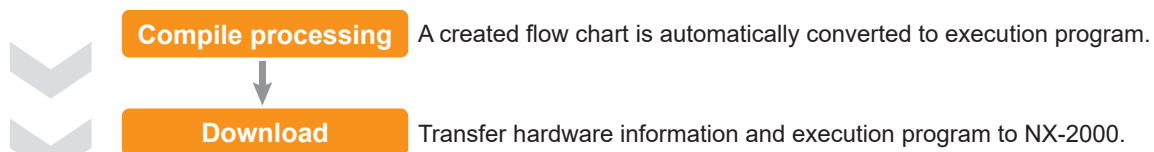
1 Program creation



System Environment	
OS	Windows7 or later
Memory	2 GB or more
CPU	Core Duo 1.5 GHz or more
HDD	2 GB more space

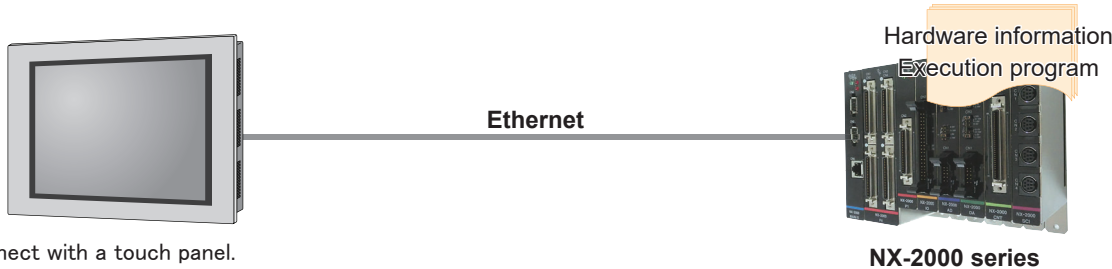
Draw a flow chart with parts that are control objects of the facility.

2 Data transfer



3 Operation

Power ON Start When the power is turned ON, the execution program launches.



- *Able to connect with a touch panel.
- *Special development environment is necessary for handling of the screen data on the touch panel.
- *Support the programmable display device of Digital Electronics Corporation, and GOT of Mitsubishi Electric.

< Development / Manufacturing >

NST NST Co., Ltd.

<http://www.nst-co.com>

58 Toyooka-cho, Chuo-ku, Hamamatsu-shi, Shizuoka, 433-8103 JAPAN

TEL. +81-53-430-6311 FAX. +81-53-430-6312